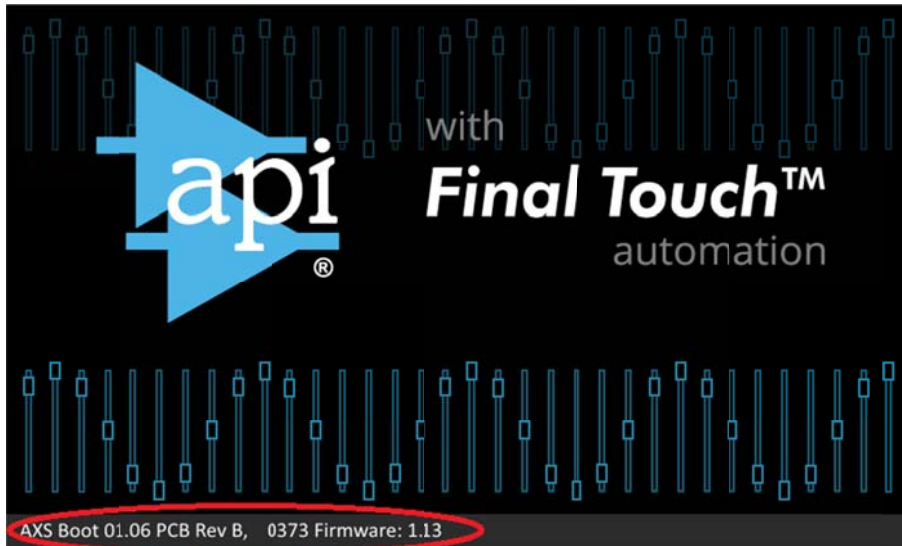


Final Touch Automation Version Check Instructions

There are up to six different software versions that are part of a complete release of the Final Touch Automation system. Please consult the service.apiaudio.com website for the latest release number and date along with all of the individual piece version to check.

ACM – Automation Control Module

The ACM has two parts, a Boot-loader and a main Application. The Boot-loader, or Boot for short, is only displayed during the startup sequence at the bottom of the splash screen. This location is circled in red below, your exact version number and info may vary. Please supply all this info when contacting API Service:

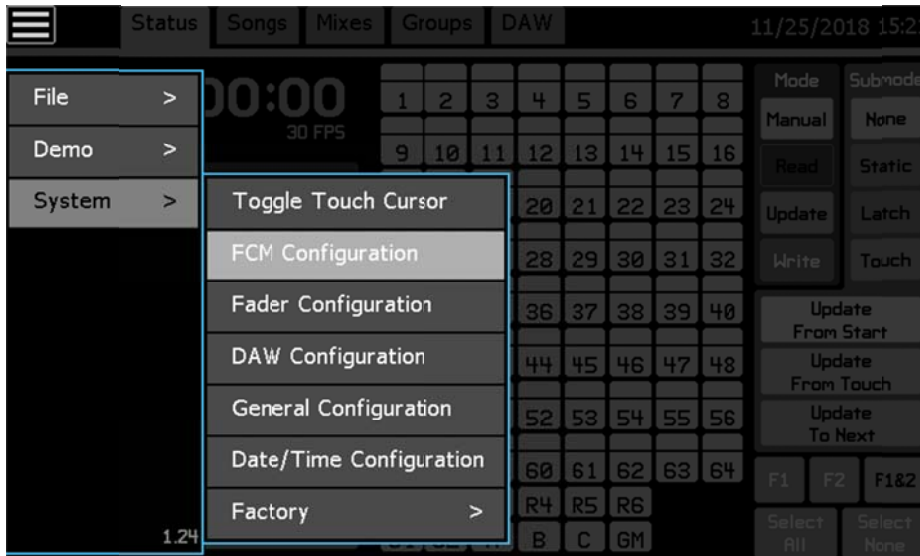


The second version to check on the ACM is the main Application. This can be seen at any time at the bottom of the main automation menu. This location is circled in red below, your number may vary.

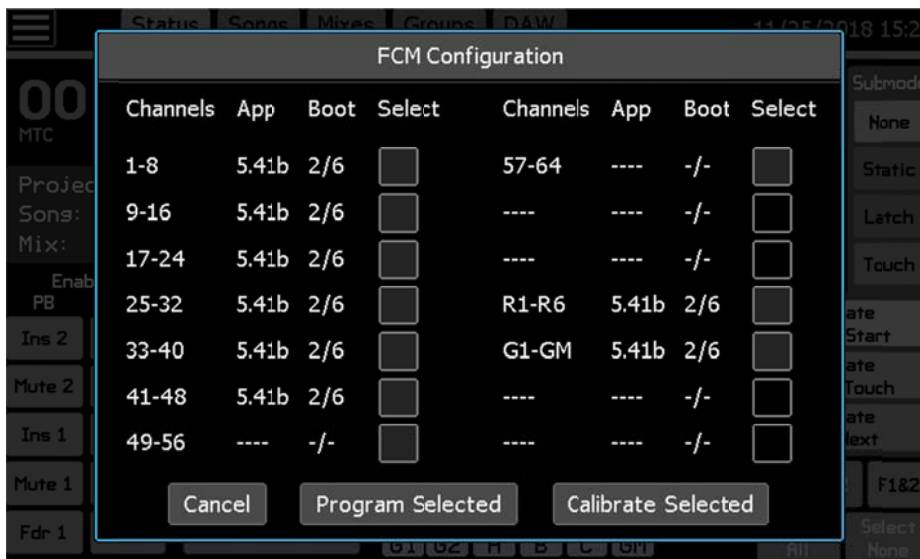


FCM – Fader Control Module

Each group of 8 faders is controlled by an FCM assembly, typically located in the frame directly below the fader modules it is controlling. Like the ACM, there are two parts to the software code in an FCM. They are also referred to as Boot and Application, or App for short. To get to the FCM Configuration page, touch the main menu button, the System sub-menu, and select FCM Configuration as shown below.

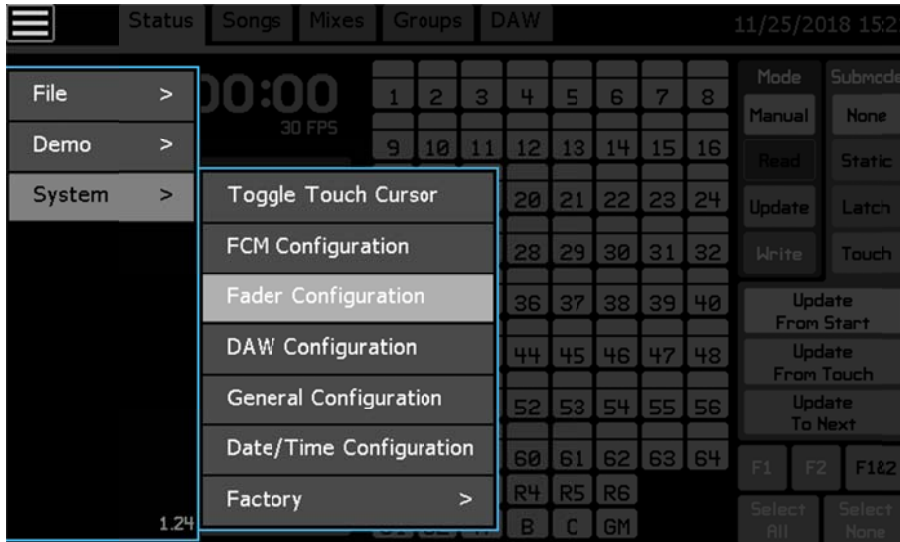


Once in the FCM Configuration screen, each FCM will be listed by the channel group that it is controlling with both the Boot and App listed. API uses two different styles of FCM. These are listed on the service website as FCM 950-0357 and FCM 950-0368. Please compare your versions with both numbers. Info in the fader version section will aid you in identifying which FCM is in your system. An example of the FCM Configuration screen is shown below, your version numbers may vary.



Fader Driver

The third and final area to check software versions is in the Fader Configuration section. Systems that have the FCM 950-0357 will NOT have a Fader Configuration version reported. So if you have no data here, you likely have FCM 950-0357's. If you have version reported, then you have FCM 950-0368's. Each individual fader will report a Boot and App version number. To get to the Fader Configuration page, touch the main menu button, the System sub-menu, and select Fader Configuration as shown below.



Once in the Fader Configuration screen, every individual fader will have a Boot and App listed. Please be sure to scroll down and check every fader to see that they are all the same version and up to date. An example of the Fader Configuration screen is shown below, your version numbers may vary.

